

접수번호 : 16-029640-01
(Receipt No.)



전기용품안전인증서

Electrical Appliances Safety Certificate

안전인증번호 (Certificate No.)	: SU10509-16008
제조사명 (Manufacturer)	: SuZhou MEAN WELL Technology Co., Ltd.
대표자명 (President)	: Mr. Jerry Lin
제조공장의 주소 (Factory Address)	: No. 77, Jian-Min Road, Dong-Qiao, Pan-Yang Ind. Park, Huang-Dai Town, Xiang-Cheng District, Suzhou, Jiangsu 215152, P.R. China
제품명 (Product)	: 직류전원장치 (AC/DC Switching Adaptor)
기본모델명 (Basic Model)	: GST25B48
정격 (Rating)	: 100-240 Vac, 50/60 Hz, 0.6 A, Class II (Output: 48 Vdc, 0.52 A, 25 W MAX.)
파생모델명 (Series Model)	: See the attachment 2
적용기준 (Standard)	: K 60950-1 (2011-12)

「전기용품안전 관리법 시행규칙」 제6조제2항에 따라 위의 전기용품에 대하여 안전인증서를 발급합니다.

We Issue Electrical Appliances Safety Certification as above product by Article 6 Section 2 of the Electrical Appliances Safety Control Law Enforcement Regulation.

2016 년 06 월 16 일
Year month day



한국산업기술시험원장
KOREA TESTING LABORATORY



※ 이 인증서는 「전기용품안전 관리법」에 따른 전기용품 안전성 확인에 한정된 것이며, 그 밖의 다른 법률이 적용되는 제품의 경우에는 해당 법률에 따라 추가로 인증·허가 등을 받아야 합니다.

- 첨부 :
(Annex)
1. 안전관리부품 및 재질목록 (List of Critical Components)
 2. 기본모델·파생모델의 내용 (Descriptions of the basic and series model)
 3. 전기용품안전인증의 변경 현황 (Revisions Status)

□ 첨부 1 : 안전관리부품 및 재질목록
List of Critical Components

부품명(회로기호) Component(Part no.)	제조사(상표명) Manufacturer(Brand)	모델명(형식) Model(Type)	정격 또는 특성 Rating or Characteristics	인증마크 Tested by
Plastic Enclosure	Sabic Innovative Plastics	SE1 or 945	V-0, 120 °C, min. 2.3 mm thick	UL
AC Inlet	Sun Fair Electric Wire & Cable (Hk) Co Ltd	S-01	2.5 A, 250 Vac	VDE
(Alternate)	Rich Bay Co Ltd	R-201SN	2.5 A, 250 Vac	VDE
(Alternate)	Zhe Jiang Bei Er Jia Electronic Co Ltd	ST-A03 series	2.5 A, 250 Vac	VDE
(Alternate)	Tecx-Unions Technology Corp	SO-222	2.5 A, 250 Vac	VDE
(Alternate)	Tecx-Unions Technology Corp	TU-301 Series	2.5 A, 250 Vac	VDE
(Alternate)	Rong Feng	RF-180 series	2.5 A, 250 Vac	VDE
Fuse (FS1)	Littelfuse Inc.	392, 369	T 2 A, 250 V	VDE
(Alternate)	Ever Island Electric Co., Ltd. and Walter Electric	2010 Serie(s)	T 2 A, 250 V	VDE
(Alternate)	Conquer	MST	T 2 A, 250 V	VDE
X-Capacitor (C1) (X1 or X2 type)	Kemet Electronics Italia Srl (Arcotronics SPA)	R.46	0.22 µF, Min. 250 Vac, 110/125 °C	ENEC
(Alternate)	Kemet Electronics Italia Srl (Arcotronics SPA)	R.49	0.22 µF, Min. 250 Vac, 110 °C	ENEC
(Alternate)	ISKRA D. D.	KNB 1560	0.22 µF, Min. 250 Vac, 275 V, 110 °C or 300 V, 125 °C	VDE
(Alternate)	ISKRA D. D.	KNB 1530	0.22 µF, Min. 250 Vac, 100 °C	VDE
(Alternate)	Liow Gu Electronics Industry Co. Ltd.	GS-L	0.22 µF, Min. 250 Vac, 110 °C	ENEC
(Alternate)	Pilkor Electronics Ltd.	PCX2 337	0.22 µF, Min. 250 Vac, 110 °C	ENEC
(Alternate)	VISHAY Capacitors Belgium NV	339	0.22 µF, Min. 250 Vac, 110 °C	ENEC

부품명(회로기호) Component(Part no.)	제조사(상표명) Manufacturer(Brand)	모델명(형식) Model(Type)	정격 또는 특성 Rating or Characteristics	인증마크 Tested by
(Alternate)	Xiamen Faratronic	MKP62	0.22 μ F, Min. 250 Vac, 110 $^{\circ}$ C	VDE
(Alternate)	Hua Jung	MKP	0.22 μ F, Min. 250 Vac, 110 $^{\circ}$ C	ENEC
(Alternate)	Carli	MPX	0.22 μ F, Min. 250 Vac, 110 $^{\circ}$ C	VDE
(Alternate)	EPCOS Electronic Components S.A.	B3292#CD series	0.22 μ F, Min. 250 Vac, 110 $^{\circ}$ C	ENEC
(Alternate)	Ultra Tech Xiphi Enterprise Co. Ltd.	HQX	0.22 μ F, Min. 250 Vac, 110 $^{\circ}$ C	ENEC
(Alternate)	Joey	MPX	0.22 μ F, Min. 250 Vac, 105 $^{\circ}$ C	VDE
(Alternate)	EPCOS Electronic Components S.A.	B3292#	0.22 μ F, Min. 250 Vac, 105 $^{\circ}$ C	VDE
(Alternate)	Pilkor Electronics Ltd.	PCX2 335M	0.22 μ F, Min. 250 Vac, 105 $^{\circ}$ C	ENEC
(Alternate)	Cheng Tung	CTX	0.22 μ F, Min. 250 Vac, 100 $^{\circ}$ C	VDE
Bridge Capacitor (C21, C31) (Y1 type)	Murata Mfg. Co., Ltd.	KX	C21: Max. 1000 pF C31: Max. 2200 pF Min. 250 Vac, 125 $^{\circ}$ C	VDE
(Alternate)	TDK-EPC Corporation	CD	C21: Max. 1000 pF C31: Max. 2200 pF Min. 250 Vac, 125 $^{\circ}$ C	VDE
(Alternate)	Walsin Technology Corp	AH	C21: Max. 1000 pF C31: Max. 2200 pF Min. 250 Vac, 125 $^{\circ}$ C	VDE
(Alternate)	Welson Industrial Co., Ltd.	WD	C21: Max. 1000 pF C31: Max. 2200 pF Min. 250 Vac, 125 $^{\circ}$ C	VDE
Photo Coupler (U2)	Lite-On Technology Corporation	LTV-817, LTV-817M, LTV817	Dti=0.4 mm, Int. dcr=5.2 mm, Ext. dcr=7.0mm, thermal cycling test, 115 $^{\circ}$ C	VDE, FIMKO

부품명(회로기호) Component(Part no.)	제조사(상표명) Manufacturer(Brand)	모델명(형식) Model(Type)	정격 또는 특성 Rating or Characteristics	인증마크 Tested by
(Alternate)	Sharp Corporation Electronic Components and Devices Division	PC123	Dti=0.4 mm, Ext. dcr=8.0 mm, thermal cycle test, 110 °C	VDE, Semko
(Alternate)	COSMO Electronics Corporation	K1010	Dti=0.7 mm, Ext. dcr=8.0 mm, thermal cycle test, 100 °C	VDE, Semko
(Alternate)	Toshiba Corp. Semiconductor Co Discrete Semiconductor Div	TLP785F	Di=0.6 mm, Int. dcr=5.0 mm, Ext. dcr=8 mm, thermal cycling test, 115 °C	VDE
(Alternate)	Toshiba Corp. Semiconductor Co Discrete Semiconductor Div	TLP785	Di=0.6 mm, Int. dcr=5.0 mm, Ext. dcr=6.5 mm, thermal cycling test, 115 °C	VDE
(Alternate)	Toshiba Corp. Semiconductor Co Discrete Semiconductor Div	TLP781F	Di=0.6 mm, Int. dcr=5.0 mm, Ext. dcr=8 mm, thermal cycling test, 115 °C	VDE
(Alternate)	Toshiba Corp. Semiconductor Co Discrete Semiconductor Div	TLP781	Di=0.6 mm, Int. dcr=5.0 mm, Ext. dcr=6.5 mm, thermal cycling test, 115 °C	VDE
Transformer (T1) (for model GST25B05, GST18B05)	Mean Well	TF-1460A	Class B	Tested with appliance
(Alternate)	JET SIGNAL	TF-1460A	Class B	Tested with appliance
(Alternate)	TEN WELL	TF-1460A	Class B	Tested with appliance
Transformer (T1) (for model GST25B07, GST18B07)	Mean Well	TF-1461A	Class B	Tested with appliance
(Alternate)	JET SIGNAL	TF-1461A	Class B	Tested with appliance
(Alternate)	TEN WELL	TF-1461A	Class B	Tested with appliance

부품명(회로기호) Component(Part no.)	제조사(상표명) Manufacturer(Brand)	모델명(형식) Model(Type)	정격 또는 특성 Rating or Characteristics	인증마크 Tested by
Transformer (T1) (for model GST25B09, GST18B09)	Mean Well	TF-1462A	Class B	Tested with appliance
(Alternate)	JET SIGNAL	TF-1462A	Class B	Tested with appliance
(Alternate)	TEN WELL	TF-1462A	Class B	Tested with appliance
Transformer (T1) (for model GST25B12, GST18B12)	Mean Well	TF-1463A	Class B	Tested with appliance
(Alternate)	JET SIGNAL	TF-1463A	Class B	Tested with appliance
(Alternate)	TEN WELL	TF-1463A	Class B	Tested with appliance
Transformer (T1) (for model GST25B15, GST18B15)	Mean Well	TF-1464A	Class B	Tested with appliance
(Alternate)	JET SIGNAL	TF-1464A	Class B	Tested with appliance
(Alternate)	TEN WELL	TF-1464A	Class B	Tested with appliance
Transformer (T1) (for model GST25B18, GST18B18)	Mean Well	TF-1465A	Class B	Tested with appliance
(Alternate)	JET SIGNAL	TF-1465A	Class B	Tested with appliance
(Alternate)	TEN WELL	TF-1465A	Class B	Tested with appliance
Transformer (T1) (for model GST25B24, GST18B24)	Mean Well	TF-1466A	Class B	Tested with appliance
(Alternate)	JET SIGNAL	TF-1466A	Class B	Tested with appliance
(Alternate)	TEN WELL	TF-1466A	Class B	Tested with appliance

부품명(회로기호) Component(Part no.)	제조사(상표명) Manufacturer(Brand)	모델명(형식) Model(Type)	정격 또는 특성 Rating or Characteristics	인증마크 Tested by
Transformer (T1) (for model GST25B28, GST18B28)	Mean Well	TF-1467A	Class B	Tested with appliance
(Alternate)	JET SIGNAL	TF-1467A	Class B	Tested with appliance
(Alternate)	TEN WELL	TF-1467A	Class B	Tested with appliance
Transformer (T1) (for model GST25B48, GST18B48)	Mean Well	TF-1468A	Class B	Tested with appliance
(Alternate)	JET SIGNAL	TF-1468A	Class B	Tested with appliance
(Alternate)	TEN WELL	TF-1468A	Class B	Tested with appliance
PCB	Interchangeable	Interchangeable	V-1 or better, min. 105 °C	UL
Bleeder Resistors (R1, R2)	Interchangeable	Interchangeable	Each max. 10 M ohms, min. 1/4 W.	Tested with appliance

유의사항 (Attention) :

1. 안전관리부품은 전기적인 안전에 직접적인 영향을 주는 부품으로서 안전인증기관이 정기공장검사 시 확인 관리 하는 사항입니다. 따라서 상기목록에 기재된 사항을 변경하거나 또는 복수등재를 원하시는 경우는 안전인증기관에 인증변경신청을 하여야 합니다.

As the "Critical components" are parts in directly related with safety, these components shall be checked during a factory inspection by the certification body. In case of applying multifil listing or changing the items above, the certification revision shall be applied.

2. 인증변경신청 없이 임의로 변경하는 경우는, 전기용품안전관리법 제 8 조제 1 항의 규정에 의한 안전인증취소 사유가 됨을 유의하시기 바랍니다.

The Safety Certification will be cancelled under the Safety Control Law for Electrical Appliances, Paragraph 1 of Article 8 if the contents of the Certification is altered without our authorization.

FP511-10-00

□ 첨부 2 : 기본모델 · 파생모델의 내용

General description of Certified Products

파생모델명 Derivative model	기본모델과의 차이점 Differences between the basic and derivative model(s)
GST25B05	Same as basic model except for transformer type, output rating and model designation. Output rating: 5 Vdc, 4 A, 20 W MAX.
GST25B07	Same as basic model except for transformer type, output rating and model designation. Output rating: 7.5 Vdc, 2.93 A, 22 W MAX.
GST25B09	Same as basic model except for transformer type, output rating and model designation. Output rating: 9 Vdc, 2.55 A, 23 W MAX.
GST25B12	Same as basic model except for transformer type, output rating and model designation. Output rating: 12 Vdc, 2.08 A, 25 W MAX.
GST25B15	Same as basic model except for transformer type, output rating and model designation. Output rating: 15 Vdc, 1.66 A, 25 W MAX.
GST25B18	Same as basic model except for transformer type, output rating and model designation. Output rating: 18 Vdc, 1.38 A, 25 W MAX.
GST25B24	Same as basic model except for transformer type, output rating and model designation. Output rating: 24 Vdc, 1.04 A, 25 W MAX.
GST25B28	Same as basic model except for transformer type, output rating and model designation. Output rating: 28 Vdc, 0.89 A, 25 W MAX.
GST18B05	Same as basic model except for transformer type, input rating, output rating and model designation. Input rating: 100-240 Vac, 50/60 Hz, 0.5 A Output rating: 5 Vdc, 3 A, 15 W MAX.
GST18B07	Same as basic model except for transformer type, input rating, output rating and model designation. Input rating: 100-240 Vac, 50/60 Hz, 0.5 A Output rating: 7.5 Vdc, 2 A, 15 W MAX.
GST18B09	Same as basic model except for transformer type, input rating, output rating and model designation. Input rating: 100-240 Vac, 50/60 Hz, 0.5 A Output rating: 9 Vdc, 2 A, 18 W MAX.
GST18B12	Same as basic model except for transformer type, input rating, output rating and model designation. Input rating: 100-240 Vac, 50/60 Hz, 0.5 A Output rating: 12 Vdc, 1.5 A, 18 W MAX.
GST18B15	Same as basic model except for transformer type, input rating, output rating and model designation. Input rating: 100-240 Vac, 50/60 Hz, 0.5 A Output rating: 15 Vdc, 1.2 A, 18 W MAX.

파생모델명 Derivative model	기본모델과의 차이점 Differences between the basic and derivative model(s)
GST18B18	Same as basic model except for transformer type, input rating, output rating and model designation. Input rating: 100-240 Vac, 50/60 Hz, 0.5 A Output rating: 18 Vdc, 1 A, 18 W MAX.
GST18B24	Same as basic model except for transformer type, input rating, output rating and model designation. Input rating: 100-240 Vac, 50/60 Hz, 0.5 A Output rating: 24 Vdc, 0.75 A, 18 W MAX.
GST18B28	Same as basic model except for transformer type, input rating, output rating and model designation. Input rating: 100-240 Vac, 50/60 Hz, 0.5 A Output rating: 28 Vdc, 0.64 A, 18 W MAX.
GST18B48	Same as basic model except for input rating, output rating and model designation. Input rating: 100-240 Vac, 50/60 Hz, 0.5 A Output rating: 48 Vdc, 0.375 A, 18 W MAX.
제품특기사항 및 시험조건 Remarks & Test conditions	
<p>1. Test Report Ref. No. : 16-029640-01 (2016.06.15)</p> <p>2. Product Description</p> <ul style="list-style-type: none"> - Measured power consumption: 28 W - Class of equipment: Class II - Protection against ingress of water: IPX0 - Mass of equipment (kg): Max. 0.18 kg 	
<p>□ 본 제품의 시험내용에 관하여 문의하실 사항이 있으시면 아래 연락처로 문의하시기 바랍니다. 시험담당자 : 디지털산업본부 정보조명평가센터 박일우 / 02-860-1436</p> <p>□ If you have any question on product testing, please contact the person below : Job holder : S.M.A.R.T. Industry Division, IT & Lighting Testing Center, Park Il-Woo / +82 2 860-1436</p>	

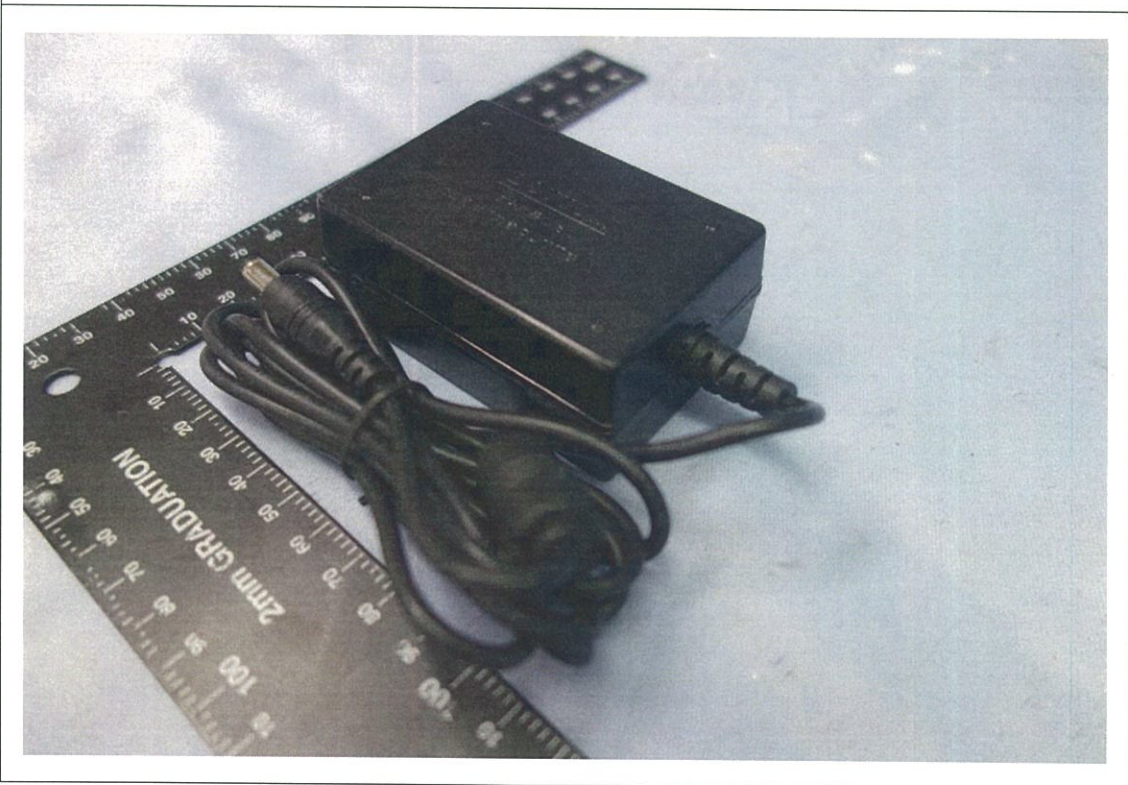
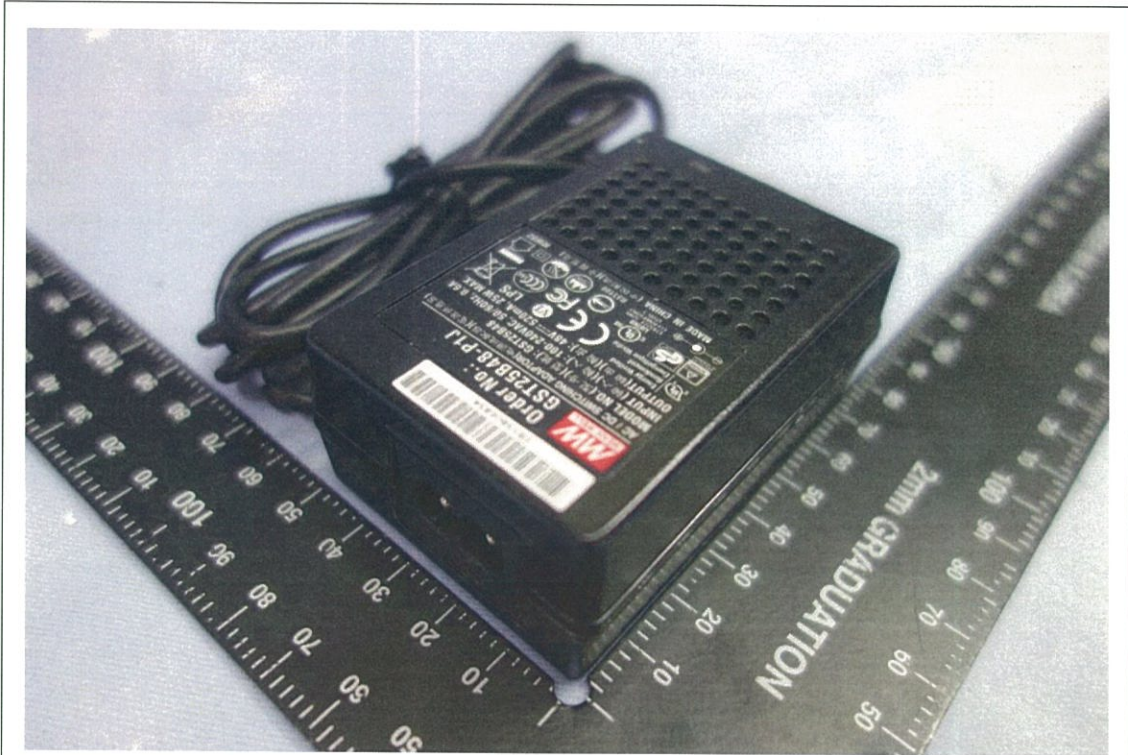
FP511-09-00

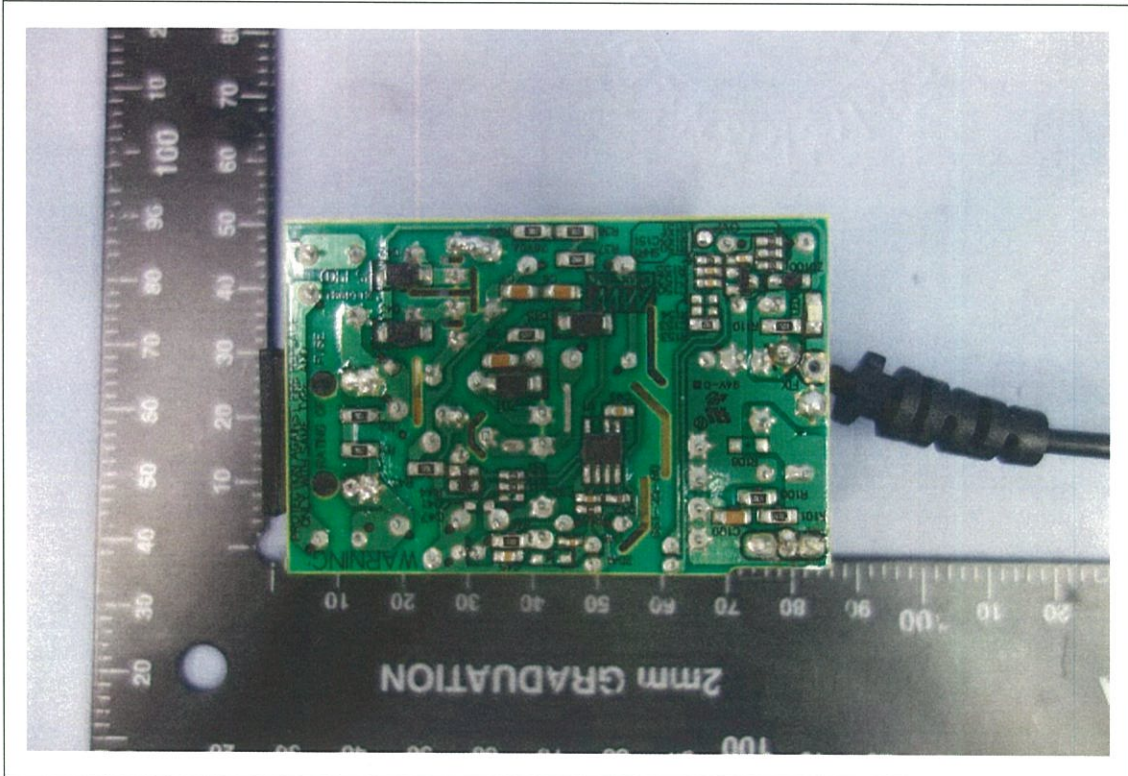
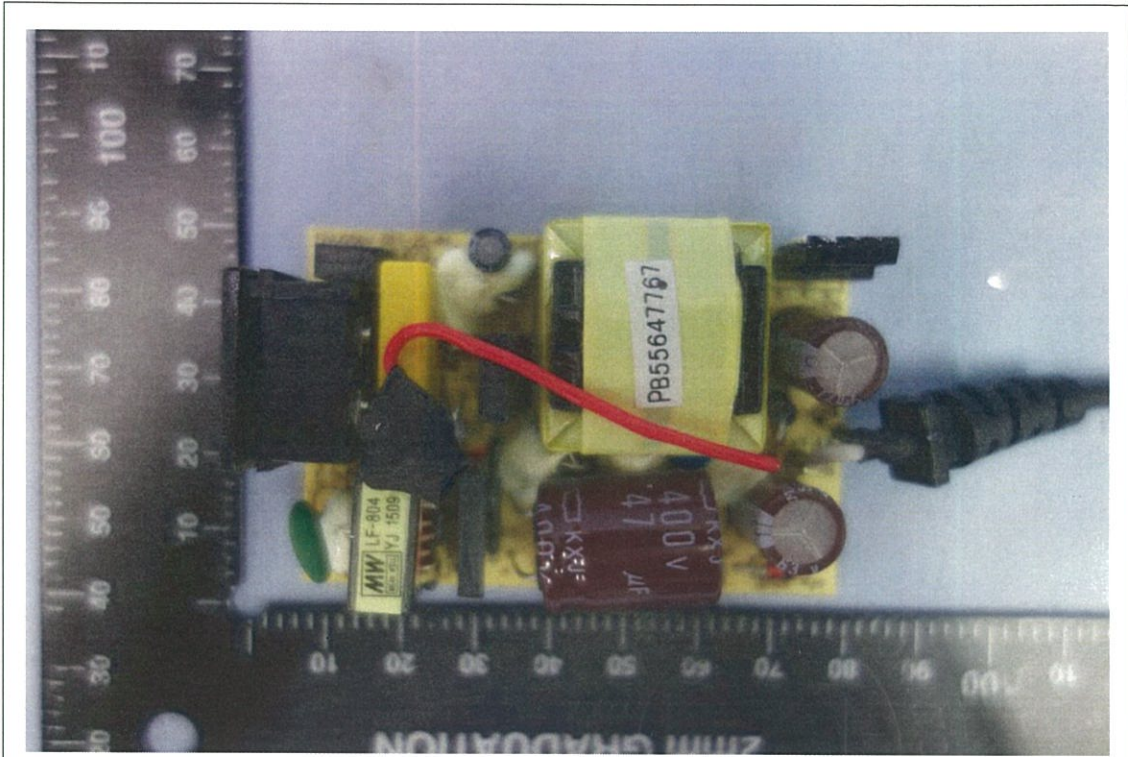
첨부 3 : 전기용품안전인증의 변경 현황
Status of Certificate Revisions

변경발급 내용 Contents of Certificate Revisions
Not applicable

FP511-11-00

첨부 : 제품사진
Photographs





FG231-04-04-00